



**ALASKA DIVISION OF HOMELAND
SECURITY & EMERGENCY MANAGEMENT**
SITUATION REPORT
25-30• January 30, 2025



Toll-Free 1.800.478.2337

Anchorage Area 907.428.7000

SEOC 907.428.7100

<p><u>SEOC Preparedness Level</u> Level 1-Routine Operations</p>	<p>http://ready.alaska.gov</p>	<p><u>National Terrorism Advisory System:</u> Read the NTAS Bulletin here</p>
<p><u>Maritime Security (MARSEC)</u> Level:1- Minimum Appropriate Security Measures</p>	<p>WHO Novel Coronavirus Pandemic (COVID-19): 2019 Novel Coronavirus</p>	<p><u>Alaska Military Installation Force Protection</u> <u>Level:</u> FPCON Bravo</p>

(Significant changes from previous situation reports are red.)

Significant Issues:

2024 January Interior Winter Storms – Disaster Declaration:

The Alaska State Department of Transportation and Public Facilities (DOT/PF) contacted SEOC yesterday reporting that the recent winter storms in the Interior required disaster-level authorities for DOT/PF to effectively respond for highway clearing and avalanche mitigation. In response, Governor Dunleavy declared a disaster emergency in the area to support DOT/PF’s emergency work.

Corrected

North Slope Fiber Outage-

SEOC confirmed with the president of Quintillion yesterday that there is only a single fiber optic break. The 2 breaks that was reported yesterday in original SITREP was inaccurate information.

Department of Health (DOH):

For current information, see: <https://health.alaska.gov/dph/Pages/default.aspx>
<https://health.alaska.gov/dph/Emergency/Pages/prepared/default.aspx>

NTAS Bulletin:

The U.S. Department of Homeland Security issued an updated National Terrorism Advisory Bulletin on May 24, 2023. The current and expired bulletins can be viewed at the below link.
<https://www.dhs.gov/national-terrorism-advisory-system>

Travel Alerts and Conditions:

- Elliott Highway from MP 72 (Junction of Elliott Highway and Dalton Highway) to MP 110 (Junction of Minto and Elliott Highway) will remain closed through Saturday February 1st.

For current driving conditions, dial 511 or visit: <https://511.alaska.gov/>

Barry Arm Landslide / Tsunami Risk:

For the latest information on the Barry Arm Landslide and Tsunami risk, click here:

<https://dggs.alaska.gov/hazards/barry-arm-landslide.html>

Earthquakes:

United States Geological Service (USGS) Earthquake Information: <http://earthquake.usgs.gov/>

National Tsunami Warning Center: <http://tsunami.gov/>

Alaska Volcanoes:

Great Sitkin Alert Level: **Watch** and Aviation Color Code: **Orange**

Mt. Spurr Alert Level: **Advisory** and Aviation Color Code: **Yellow**

For Alaska Volcano updates, go to: <https://www.avo.alaska.edu/>

Air Quality Index (AQI) Advisories:

For the most up-to-date Air Quality Index Advisories:

<http://dec.alaska.gov/Applications/Air/airtoolsweb/Home/Index>

Spills of Oil and Hazardous Substances:

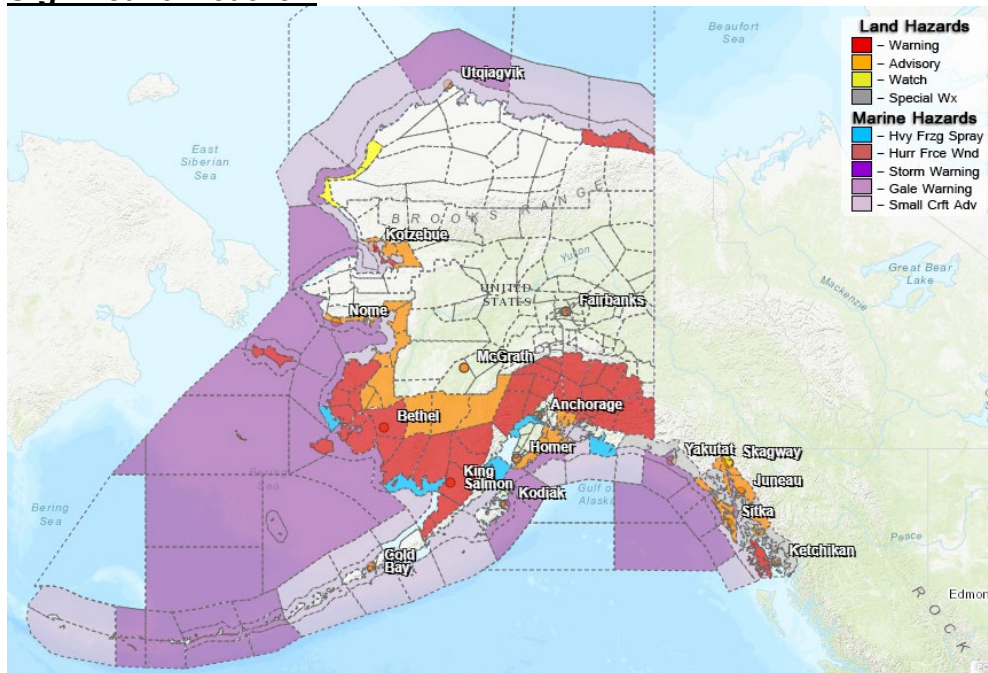
The Alaska Division of Environmental Conservation (ADEC) Spill Prevention and Response page is located at: <https://dec.alaska.gov/spar/>

Alaska Cyber Security Information:

State Employees may sign up for cybersecurity notifications and alerts at:

<https://oit.alaska.gov/security>

Significant Weather:



Special Weather Statement:

- **City and Borough of Yakutat, Municipality of Skagway, Haines Borough and Klukwan, Glacier Bay, Eastern Chichagof Island, Cape Fairweather to Lisianski Strait, City and Borough of Sitka, Admiralty Island, City and Borough of Juneau, Petersburg Borough, Western Kupreanof and Kuiu Island, Prince of Wales Island, City and Borough of Wrangell, Ketchikan Gateway Borough, City of Hyder, Annette Island- very cold temperatures beginning this weekend.**

Blizzard Warning:

- **Eastern Beaufort Sea Coast**-in effect until 9am Friday.
- **Yukon Delta Coast, St Lawrence Island**-in effect until to 3am Friday.
- **Baldwin Peninsula**-in effect from 8pm this evening to 9am Saturday.
- **Bristol Bay**-from 9am today until 3am Friday.
- **Northeast Prince William Sound**- until 3pm today for Thompson Pass and Keystone canyon.
- **Kuskokwim Delta**-until noon Friday.

Winter Storm Warning:

- **Prince of Wales Island**- in effect until 9pm this evening.

Winter Weather Advisory:

- **Haines Borough and Klukwan**- remains in effect until noon today.
- **Cape Fairweather to Lisianski Strait, City and Borough of Sitka, City and Borough of Juneau, Petersburg Borough**-until 3pm this afternoon.
- **Eastern Norton Sound and Nulato Hills**-from 2pm this afternoon to 9am Friday.
- **Lower Yukon River**-in effect from 3pm this afternoon to 9am Friday.
- **Lower Kobuk Valley**-from 9pm this evening to 9am Saturday.
- **Southern Seward Peninsula Coast**-in effect from 3pm this afternoon to 3pm Saturday.

Winter Storm Watch:

- **Western Arctic Coast**- in effect from late Friday night through Saturday afternoon.

Cold Weather Advisory:

- **Kuskokwim Delta, Lower Kuskokwim Valley**- in effect until 11am this morning.
- **Western Prince William Sound**- remains in effect until 9am Friday.

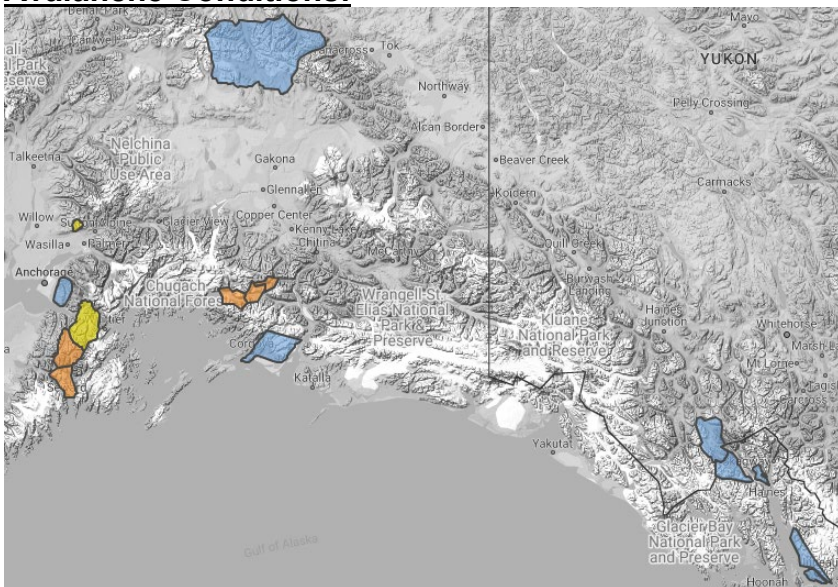
Extreme Cold Watch:

- **Municipality of Skagway**- in effect from Friday evening through Saturday afternoon.

For more information and the most current Weather, Watches/Warning/Advisories go to:

<https://www.weather.gov/arh/>

Avalanche Conditions:



Summit Lake – Low below 1,000', Moderate from 1,000'-2,500', Considerable above 2,500'

Turnagain Pass – Low below 1,000', Moderate at 1,000' and above.

Seward and Lost Lake- Low below 1,000', Moderate from 1,000'-2,500', Considerable above 2,500'

Valdez Maritime, Intermountain, and Continental– Moderate below 1,500', Considerable above 1,500'.

Hatcher Pass- Moderate at all levels.

For more information and the most current avalanche conditions, go to: <https://alaskasnow.org/>

The Next Situation Report will be on **January 31, 2025**. An interim report will be prompted by a significant change in the situation or the threat level. This report is posted on the internet at <https://ready.alaska.gov/sitrep>.

To register for email distribution, PLEASE go to:

<http://list.state.ak.us/mailman/listinfo/dhsem.situation.report>.

Direct questions regarding this report to the SEOC at 907-428-7100 or seoc@alaska.gov.